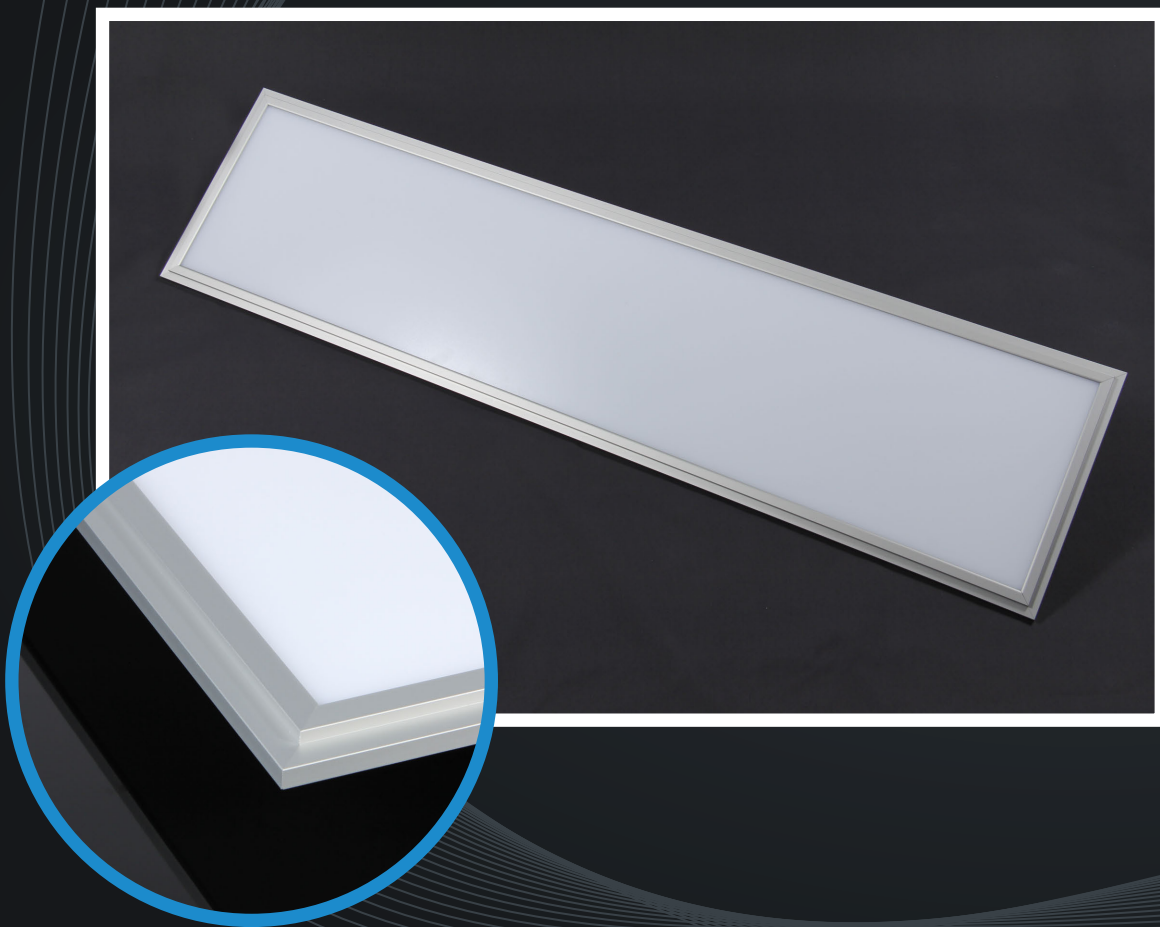


# MODEL : FL-1230E



SPECIFICATIONS	
MODEL	FL-1230E
POWER CONSUMPTION	50 Watt
DIMENSIONS	1,200mm x 300mm x 13mm
WEIGHT	4.5 kg
OPERATION TEMPERATURE	-30°C ~ 65°C
STORAGE TEMPERATURE	-40°C ~ 80°C
IP RATE	Indoor
LUMINOUS FLUX	3,755 lm
COLOR TEMPERATURE	5,700K
COLOR RENDERING INDEX	Type 80 Ra
LED	5050, 3Chip
BEAM ANGLE	160°
LUMINOUS EFFICIENCY	75 lm/W
POWER SUPPLY	Included
CONNECTION TYPE	Cable Connector
USAGE	Flat Light



**Shinwoo** Europe BV

Roald Amundsenstraat 5  
1363 KH, Almere, The Netherlands

www.shinwoo.nl  
sweurope@gmail.com

**MADE IN KOREA**